

# C.F. Struck Corporation

PO Box 307  
Cedarburg, WI 53012

Phone (262) 377-3300

Fax (262) 377-9247

email

---

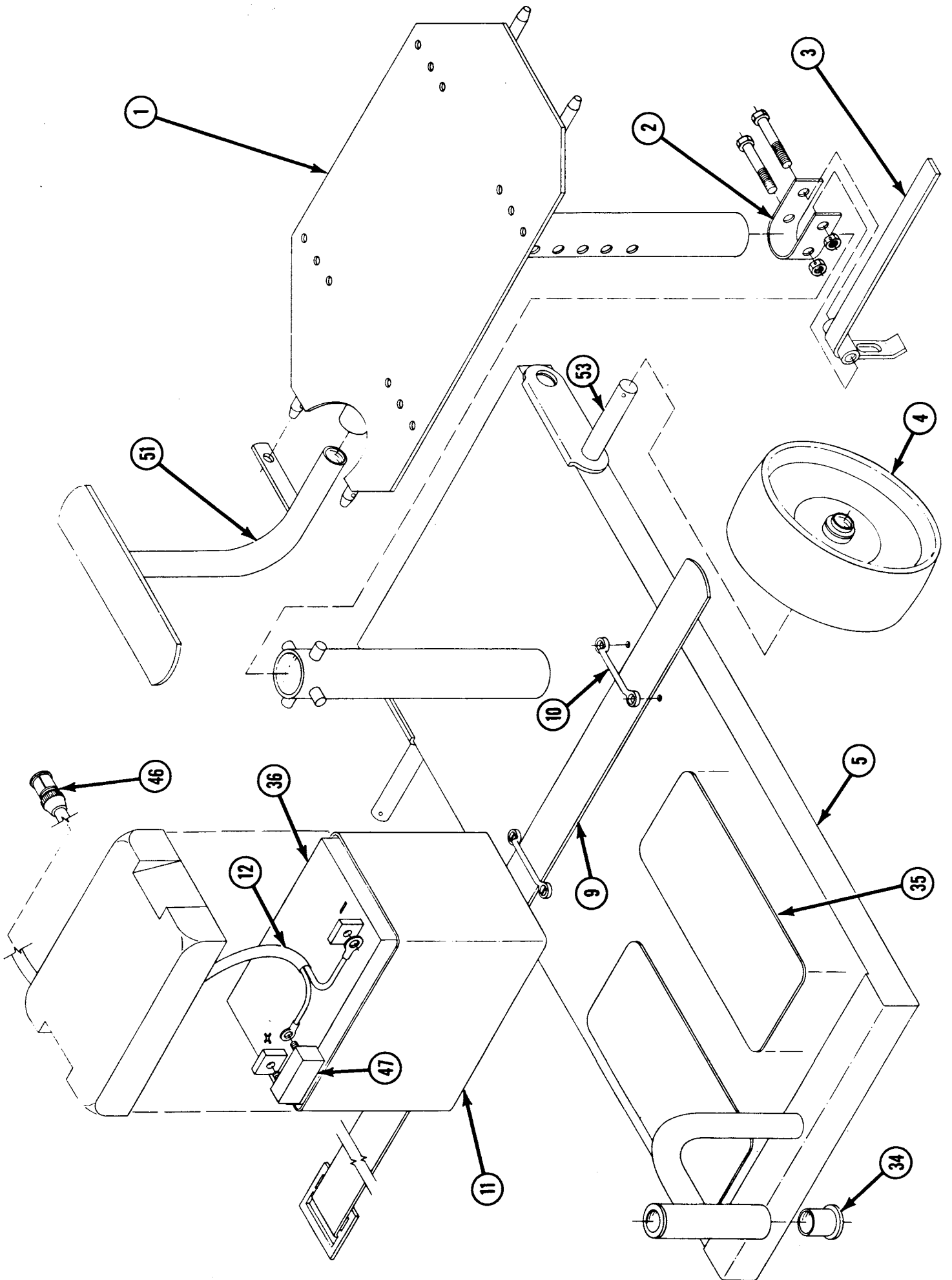
Part availability for Mini Beep Scooter – Parts NOT listed are NOT available

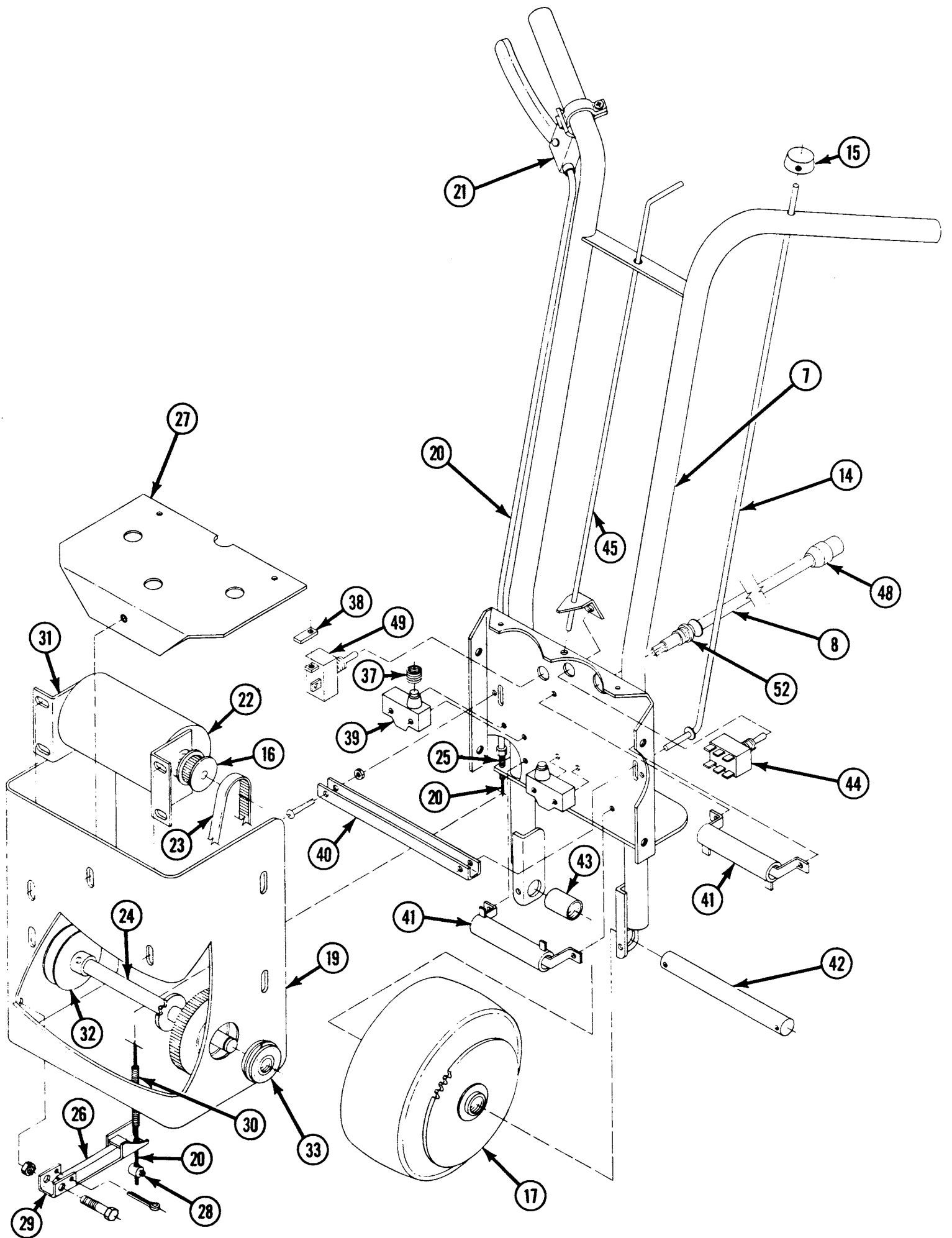
Prices effective as of 4-1-04. Prices and availability subject to change without notice.

Part #	Description	Price
ES-6	Seat	63.31
ES-8	Power Cord Assembly	11.83
ES-9	Belt Strap for Battery Case	5.23
ES-12	Battery Cord Assembly	9.19
ES-15	Throttle Button	4.57
ES-16	Motor Pulley	17.11
ES-18	Drive Chain - Standard	7.48
ES-18	Drive Chain - Short, High Performance	7.48
ES-18	Drive Chain - Long, High Performance	7.48
ES-20	Cable Assembly	3.63
ES-21	Brake Handle	13.92
ES-22	Motor	165.00
ES-23	Drive Belt	11.00
ES-24	Drive Shaft - Standard	65.89
ES-24	Drive Shaft - High Performance	65.89
ES-25	Stem Bolt	2.97
ES-28	Cable Lock	1.32
ES-30	Brake Spring	1.21
ES-32	V-Brake Pulley	5.89
ES-33	Bearing with Ring	12.76
ES-34	Nylon Bearing	2.15
ES-35	Foot Pad	1.76
ES-37	Switch Spring	1.27
ES-39	Micro Switch	21.51
ES-41	Resistor	12.87
ES-42	Axle (Front)	9.57
ES-44	Directional Switch	11.83
ES-46	Socket (Male)	13.15
ES-47	Fuse	5.83
ES-48	Plug (Female)	5.01
ES-52	Strain Relief	0.88
***	Hitch Pin (Header unit to platform)	0.85
BG17	Gel Cell Battery	83.40

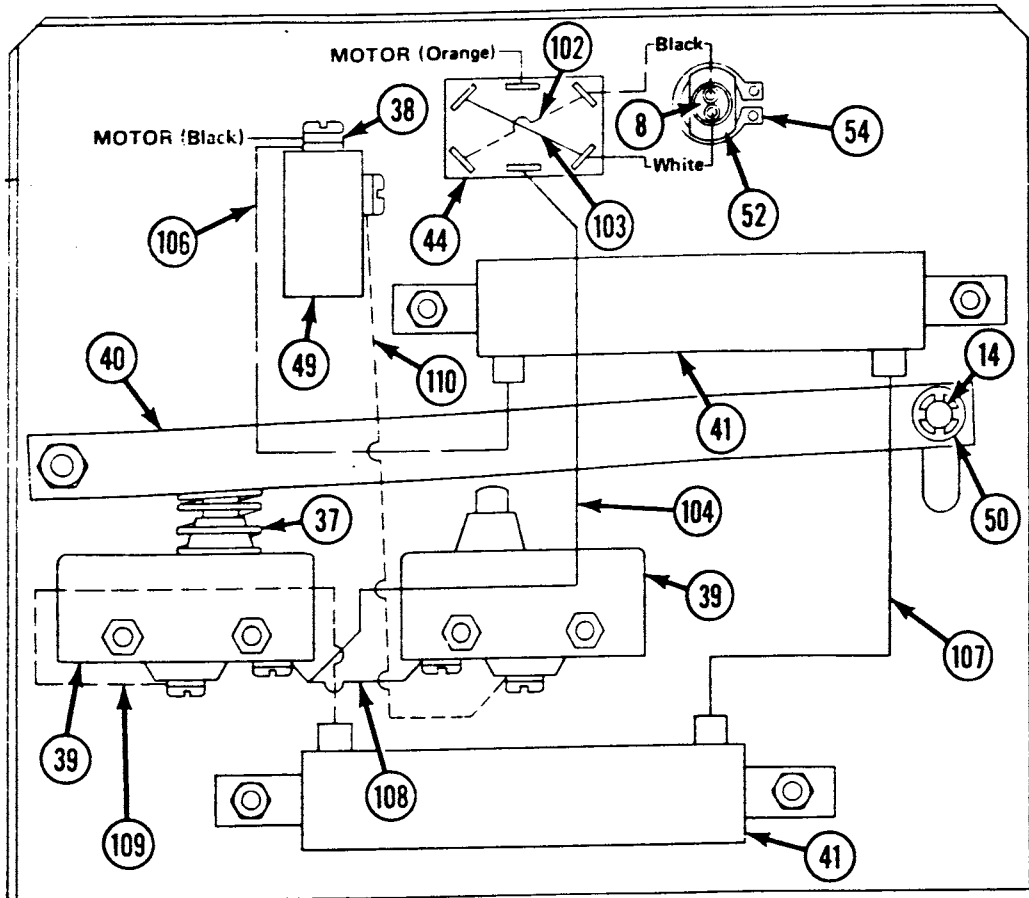
Battery charger no longer available-purchase at local hardware store and put Struck plug on it.

*Shipping costs will be added to your order amount. We accept personal checks, VISA and Mastercard. We will ship C.O.D. with approval. Make checks payable to C.F.*





WIRING DIAGRAM (Throttle on Left)



WIRING DIAGRAM (Throttle on Right)

